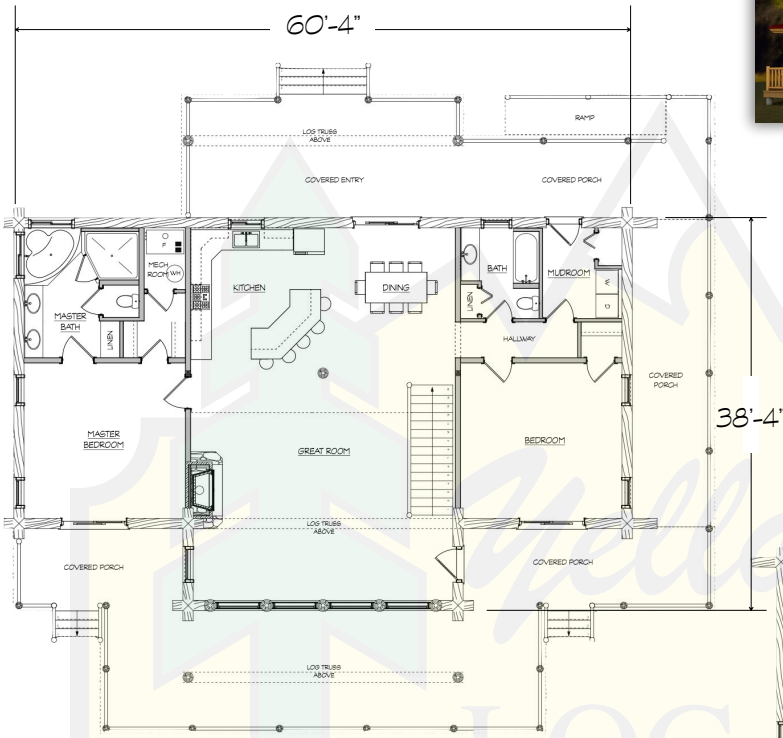
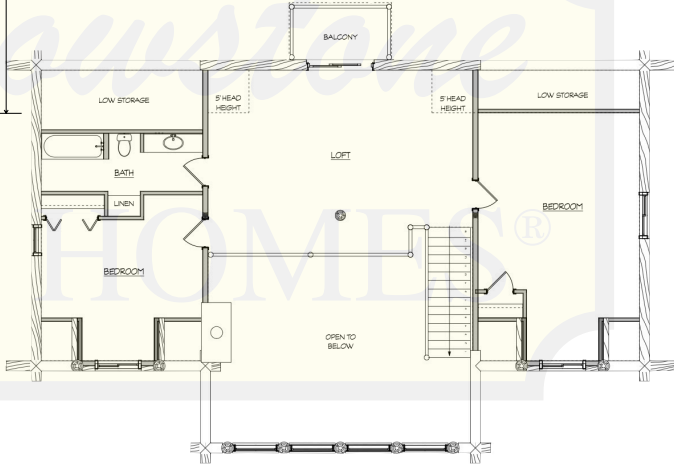


# GRIZZLY BEAR



MAIN LEVEL	2016 SF
SECOND LEVEL	1370 SF
LIVING AREA	3386 SF
TOTAL AREA	3386 SF

MAIN LEVEL



SECOND LEVEL



280 N Yellowstone Hwy  
Rigby, ID 83442

phone: (208) 745-8108  
fax: (208) 745-8525

sales@yellowstonelohomes.com  
www.yellowstonelohomes.com