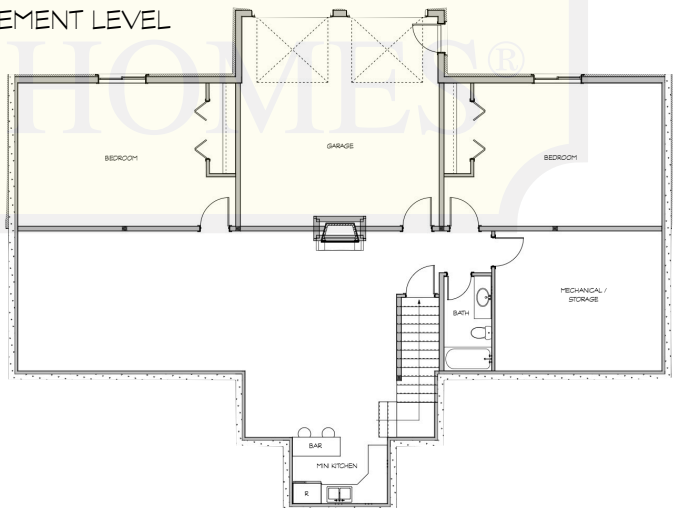
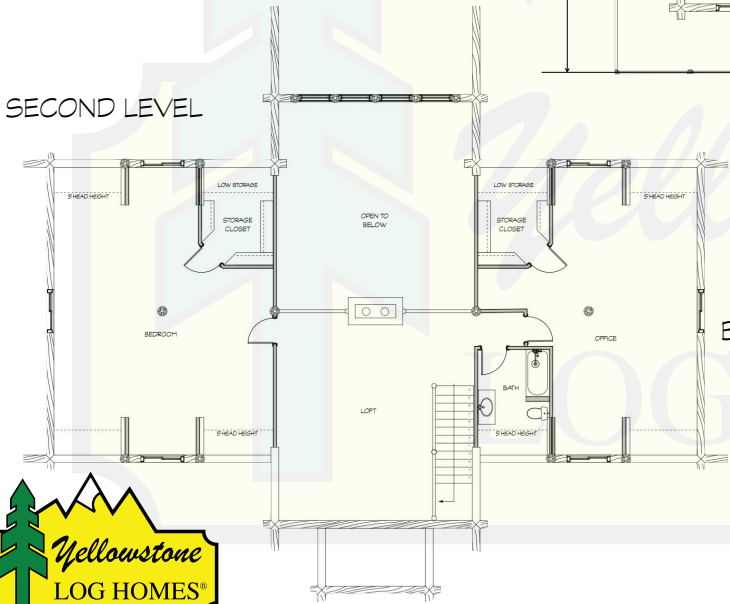
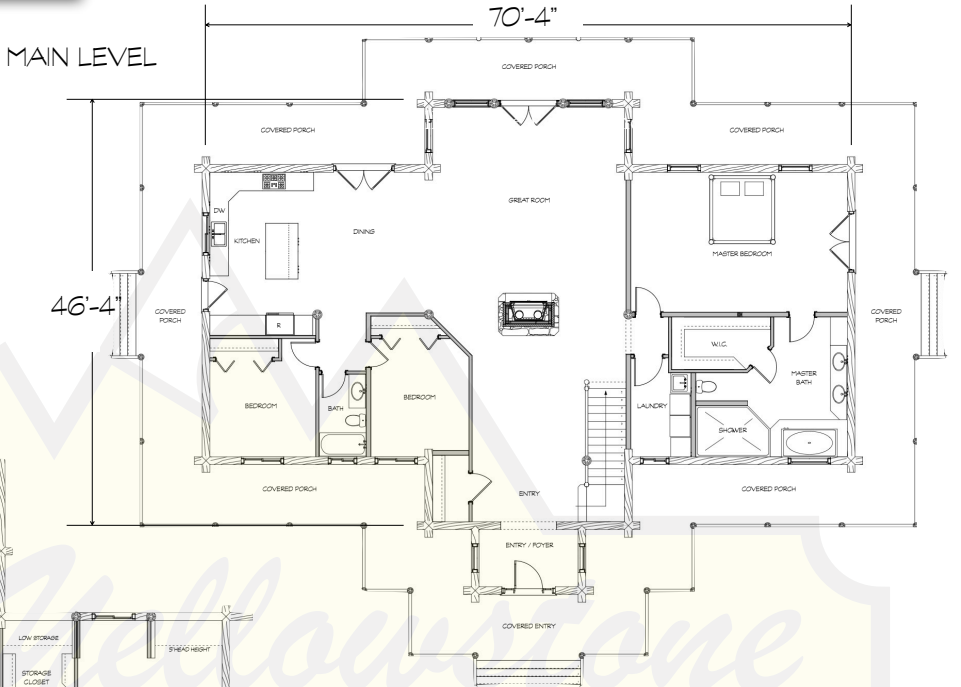


KODIAK 3



MAIN LEVEL	2632 SF
SECOND LEVEL	1920 SF
BASEMENT	2121 SF
LIVING AREA	6673 SF
GARAGE	511 SF
TOTAL AREA	7184 SF



280 N Yellowstone Hwy
Rigby, ID 83442

phone: (208) 745-8108
fax: (208) 745-8525

sales@yellowstonelohomes.com
www.yellowstonelohomes.com