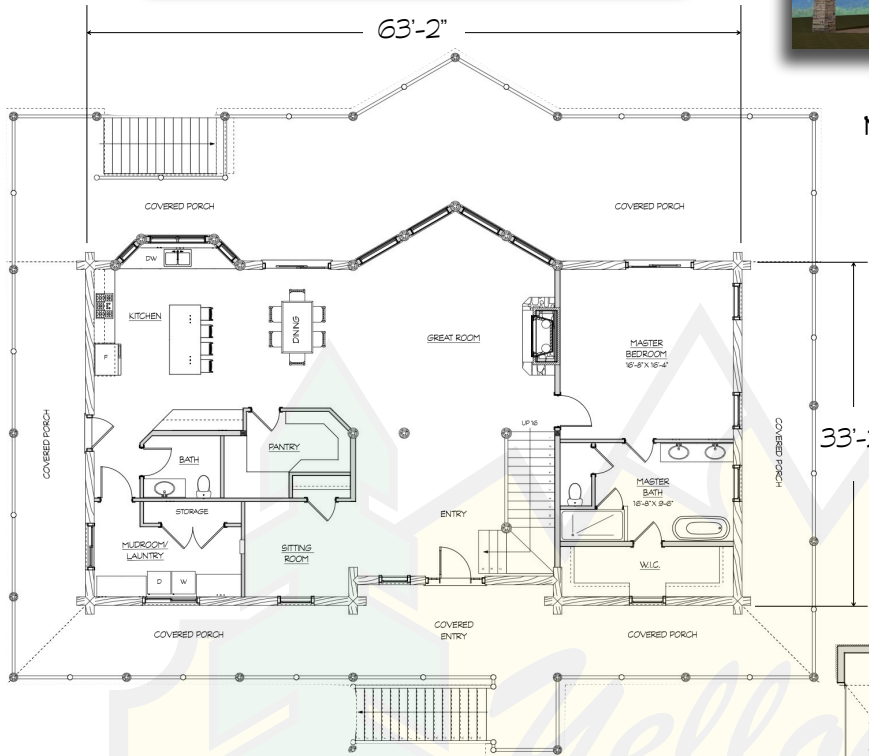


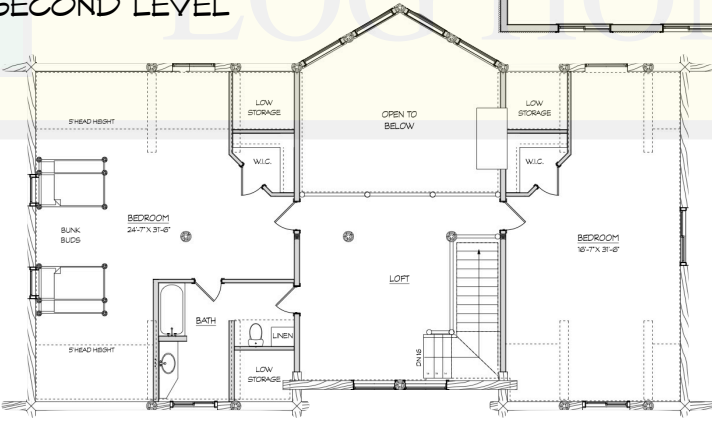
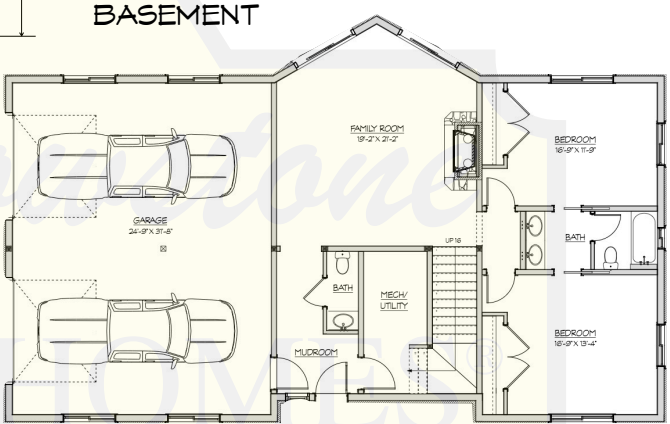
# WILDERNESS



MAIN LEVEL

MAIN LEVEL	2098 SF
SECOND LEVEL	1576 SF
BASEMENT LEVEL	1259 SF
LIVING AREA	4933 SF
GARAGE	839 SF
TOTAL AREA	5772 SF

SECOND LEVEL



280 N Yellowstone Hwy  
 Rigby, ID 83442  
 phone: (208) 745-8108  
 fax: (208) 745-8525  
 sales@yellowstonelohomes.com  
 www.yellowstonelohomes.com