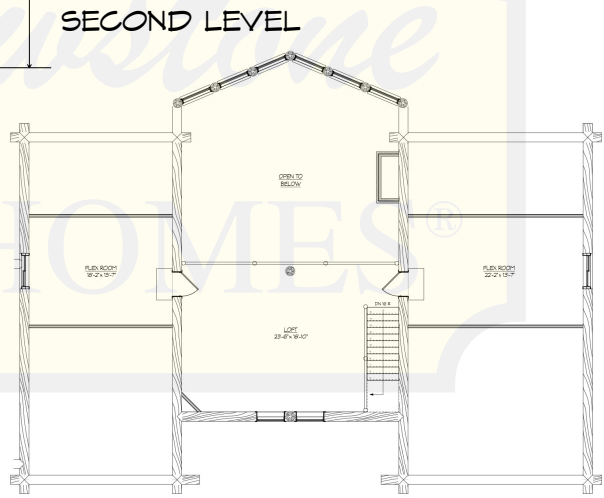
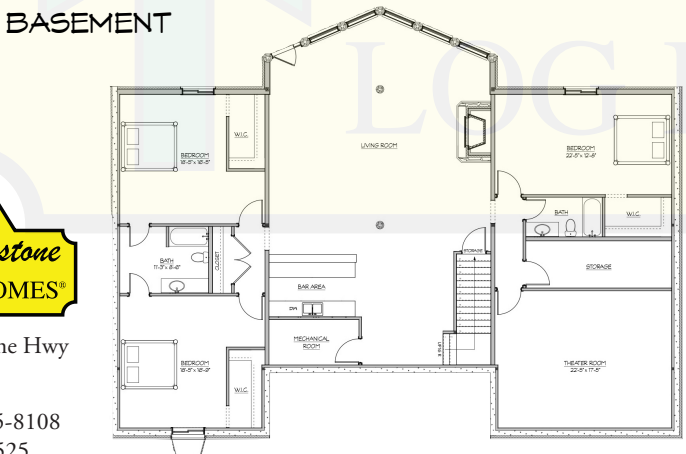
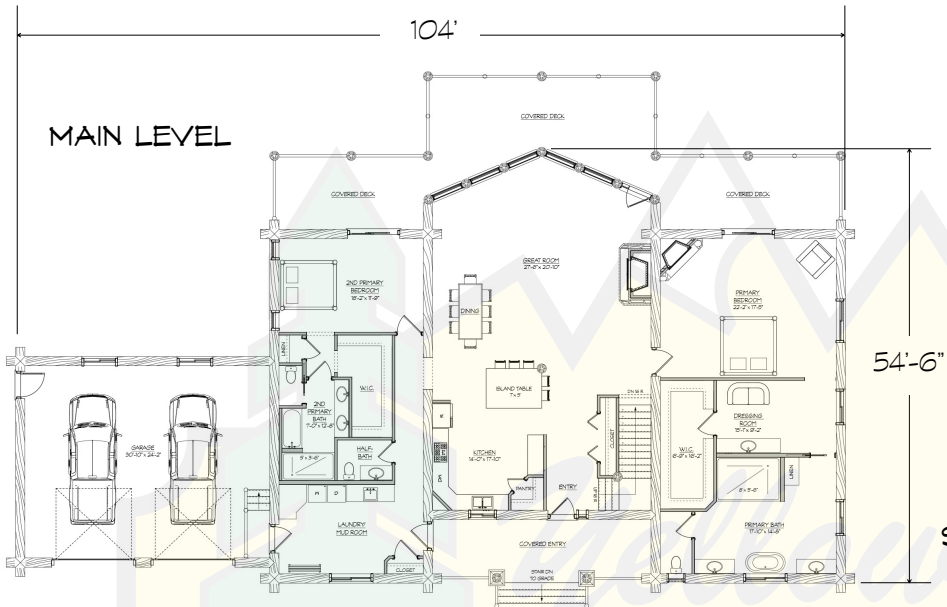


STONEHAVEN 2



MAIN LEVEL	3157 SF
SECOND LEVEL	1019 SF
BASEMENT LEVEL	3157 SF
LIVING AREA	7333 SF
GARAGE	832 SF
TOTAL AREA	8165 SF



280 N Yellowstone Hwy
 Rigby, ID 83442

phone: (208) 745-8108
 fax: (208) 745-8525

sales@yellowstoneloghomes.com
 www.yellowstoneloghomes.com