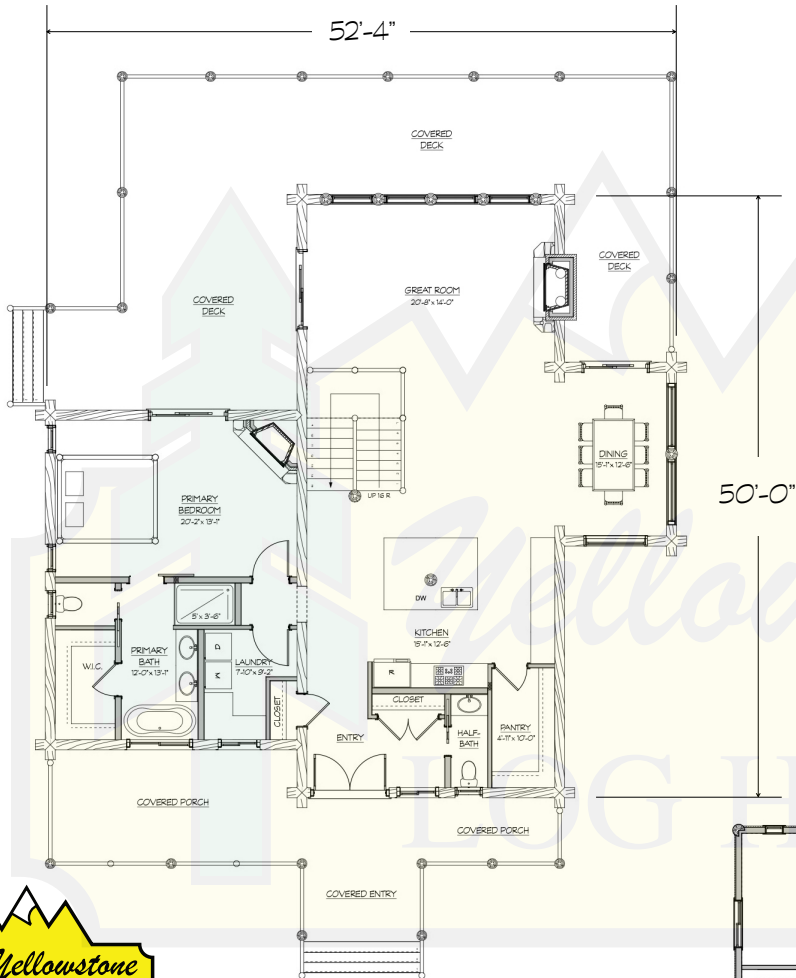


CRAFTSMAN 2

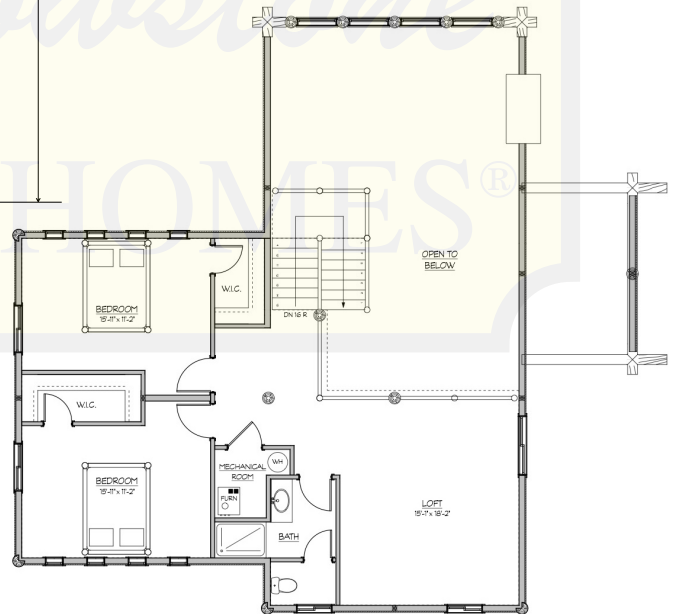


MAIN LEVEL



MAIN LEVEL	1828 SF
SECOND LEVEL	960 SF
TOTAL AREA	2788 SF

SECOND LEVEL



280 N Yellowstone Hwy
Rigby, ID 83442

phone: (208) 745-8108
fax: (208) 745-8525

sales@yellowstonelohomes.com
www.yellowstonelohomes.com