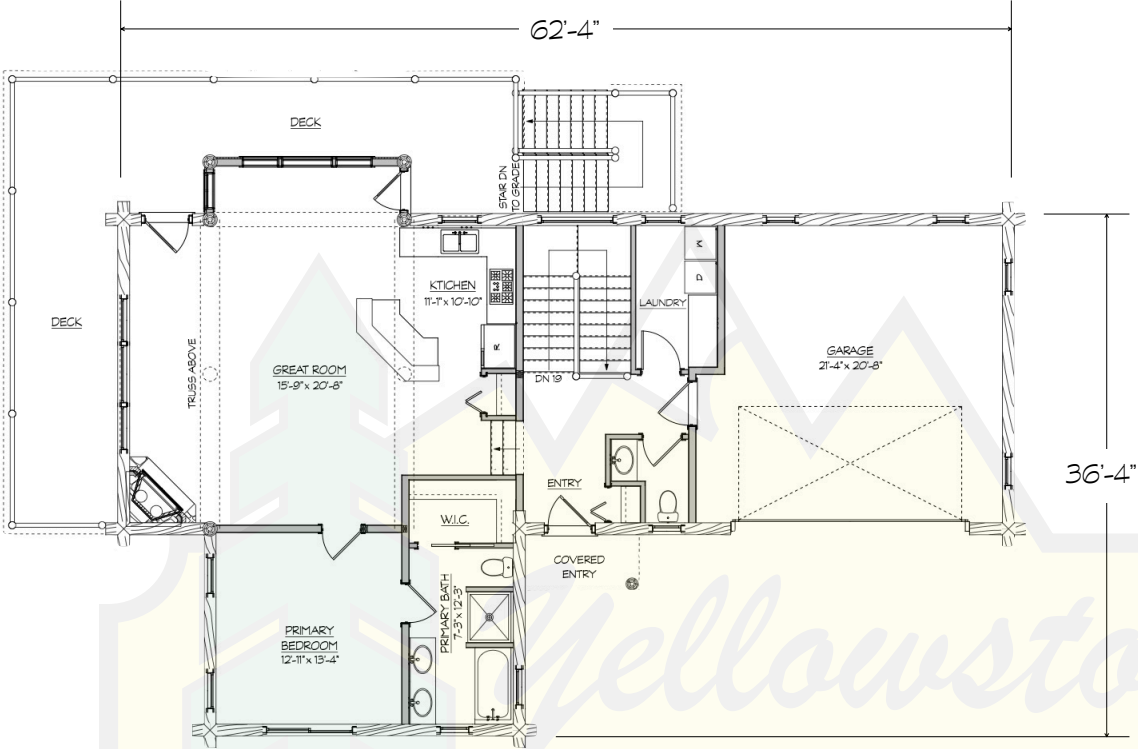


SKI HOUSE

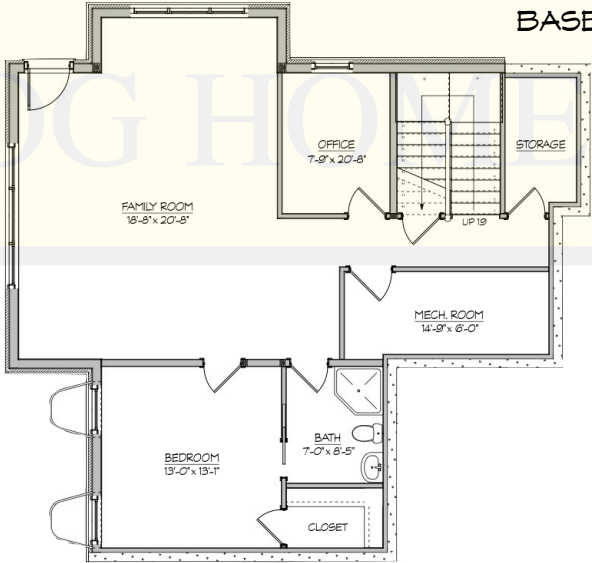


MAIN LEVEL



MAIN LEVEL	1265 SF
BASEMENT LEVEL	1265 SF
LIVING AREA	2530 SF
GARAGE	460 SF
TOTAL AREA	2990 SF

BASEMENT



280 N Yellowstone Hwy
Rigby, ID 83442

phone: (208) 745-8108
fax: (208) 745-8525

sales@yellowstonelohomes.com
www.yellowstonelohomes.com